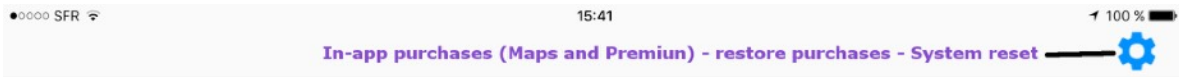
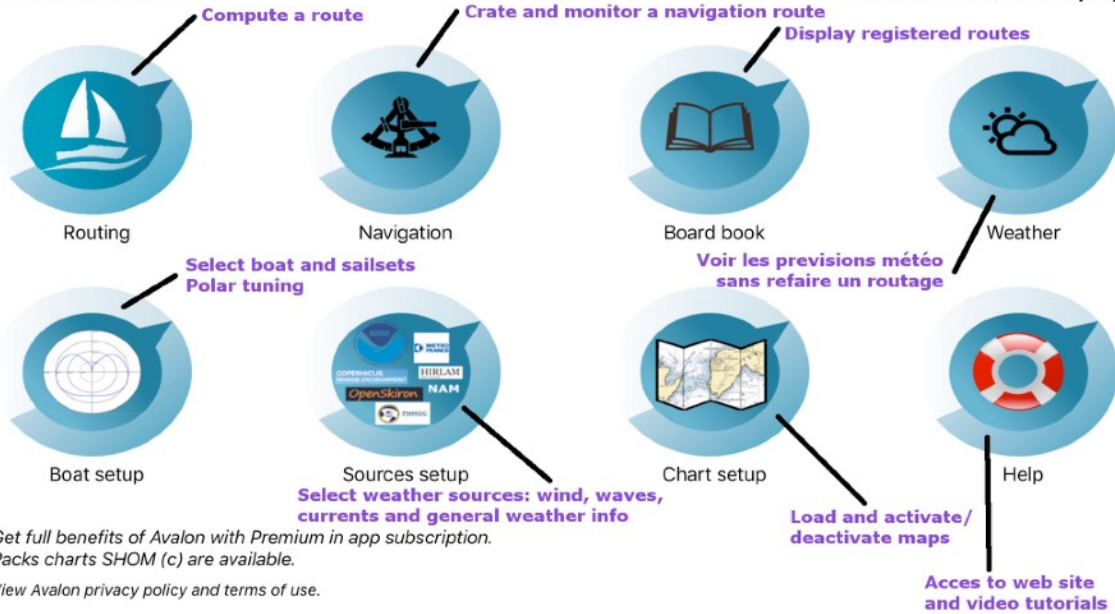


# Avalon Offshore Quick Start Guide



Avalon Offshore V3.1

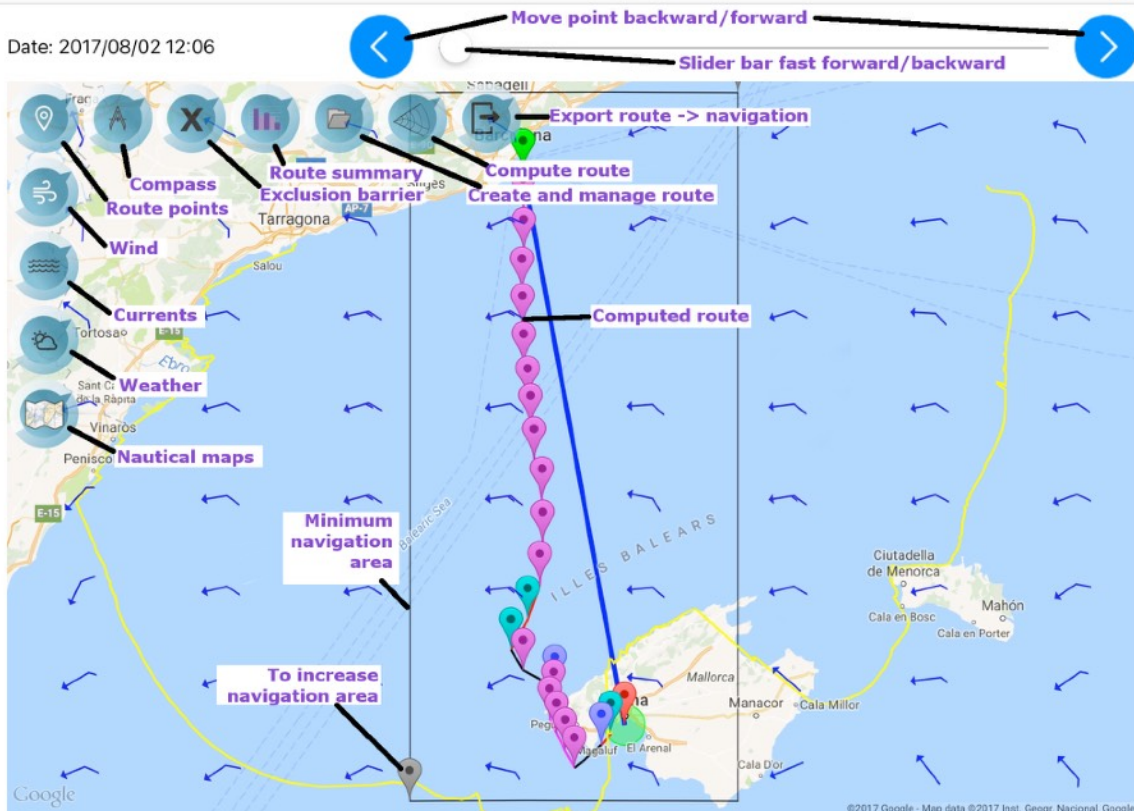
Premium ends : 2020/12/03

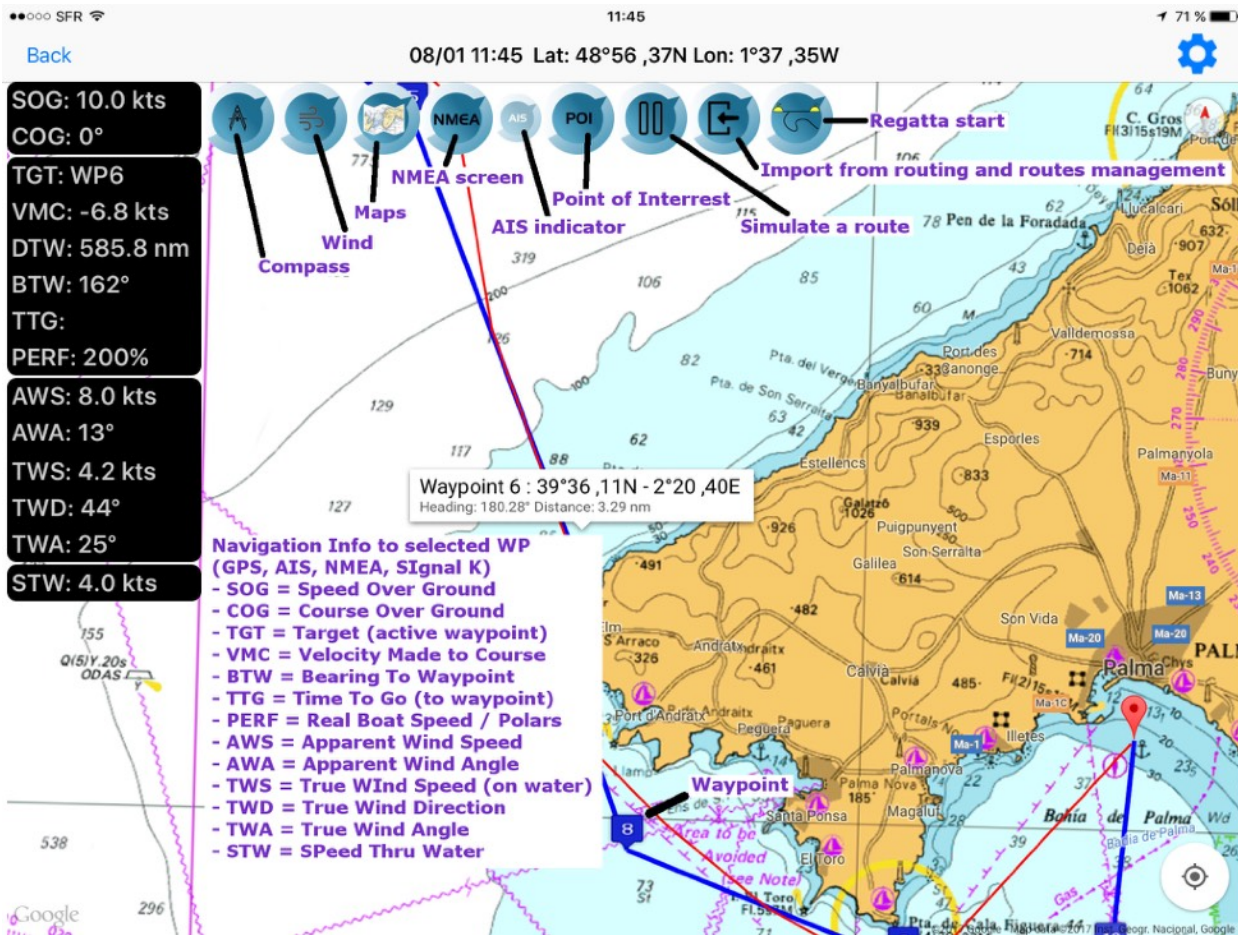


Get full benefits of Avalon with Premium in app subscription.  
Packs charts SHOM (c) are available.  
View Avalon privacy policy and terms of use.



Date: 2017/08/02 12:06





## Handling route points: start, arrival and waypoints

- Moving the start or end point: Long click on the point. Icon moves slightly up and we can slide the point to its desired position.
- Modify start or end point settings: Short click on the point, then short click on the tooltip. You can then modify latitude, longitude or the time between heading changes to be apply from this point.
- Create a waypoint: Zoom on the blue line between start and end point. Short click on the line to create a new waypoint or a stop over.
- Moving a waypoint or a stop over: Long click on the point. Icon moves slightly up and we can slide the point to its desired position.
- Modify waypoint or stop over settings: Short click on the point, then short click on the tooltip. You can then modify latitude, longitude, the time between heading changes to be apply from this point, arrival zone and time to stay on this point in the case of a stop over.
- Delete a waypoint or a stop over: Short click on the point, then short click again. You can then delete the point in the parameters window that gets displayed.
- Note: You cannot modify the start and arrival point when you are in navigation mode. Those are fixed in the Routing module and can only be modified in this module.

You can access the complete User's guide at: <http://www.avalon-routing.com/en/users-guide/>