



# **Quick Start Guide Avalon Offshore**

Avalon Offshore for iOS  
Avalon Offshore for Android

March 14, 2019

## A. Introduction

This tutorial is to help new users of Avalon Offshore to calculate their first . It only describe a very limited set of the software.

## B. Steps

1. Purchase the app on the store corresponding to your device (AppStore or Google Play. The app will get installed automatically on your device.
2. Only for Apple iOS users, please go to your device settings and:
  - Open iCloud for Avalon. This will enable you to benefit from the Premium offshore during 1 month.
  - Set Avalon use of GPS to « always ».
3. Launch the app.

18:31 Thu 14 Mar

47 %



Avalon Offshore V3.7.4

Premium ends : 2020/01/02



Routing



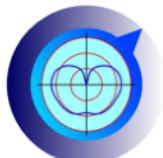
Navigation



Board book



Weather



Boat setup



Sources setup



Chart setup



Help

Get full benefits of Avalon with Premium in app subscription.  
Packs charts SHOM (c) are available.

[View Avalon privacy policy and terms of use.](#)

Internet

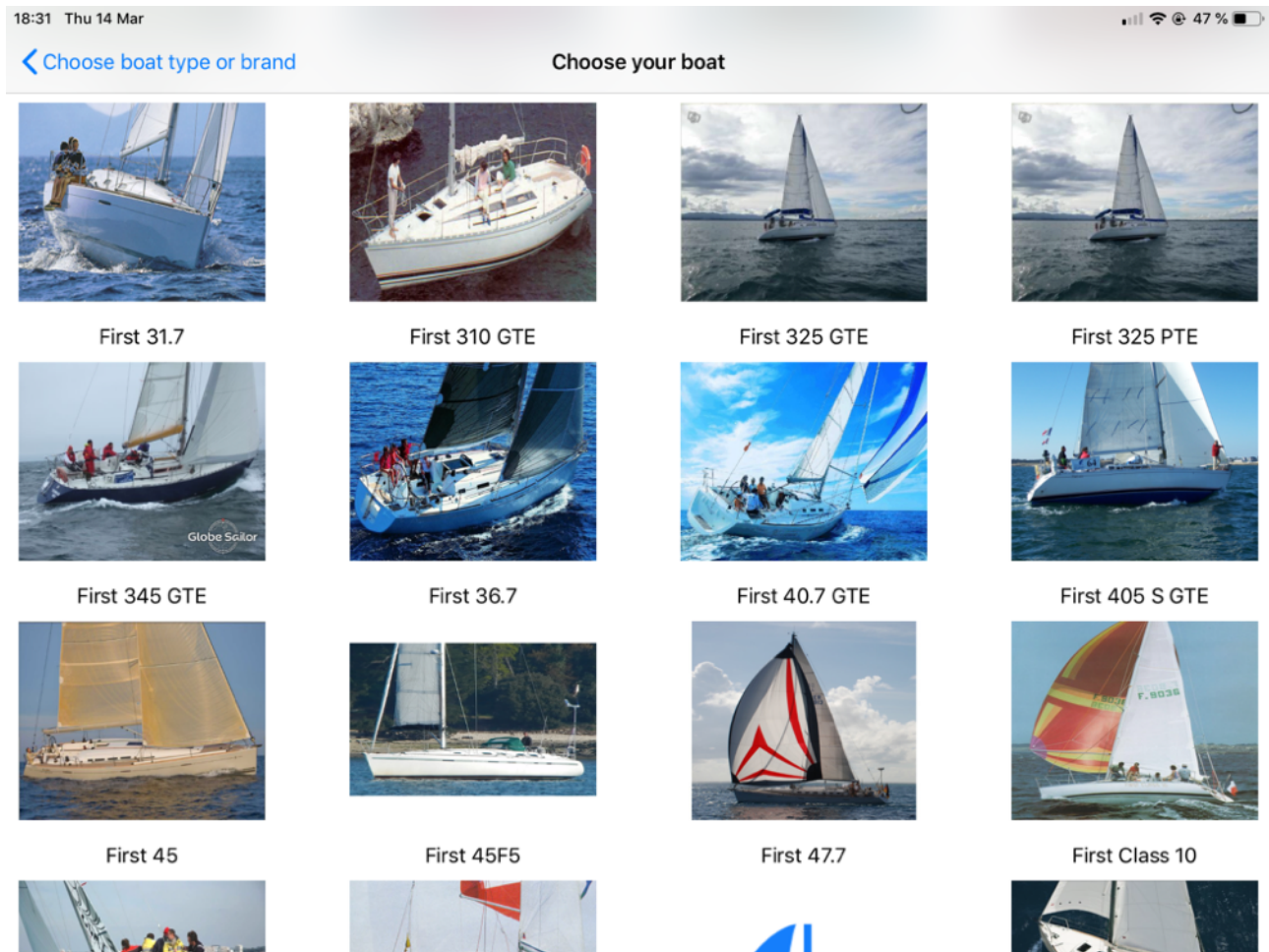
OFF

WIFI / 4G

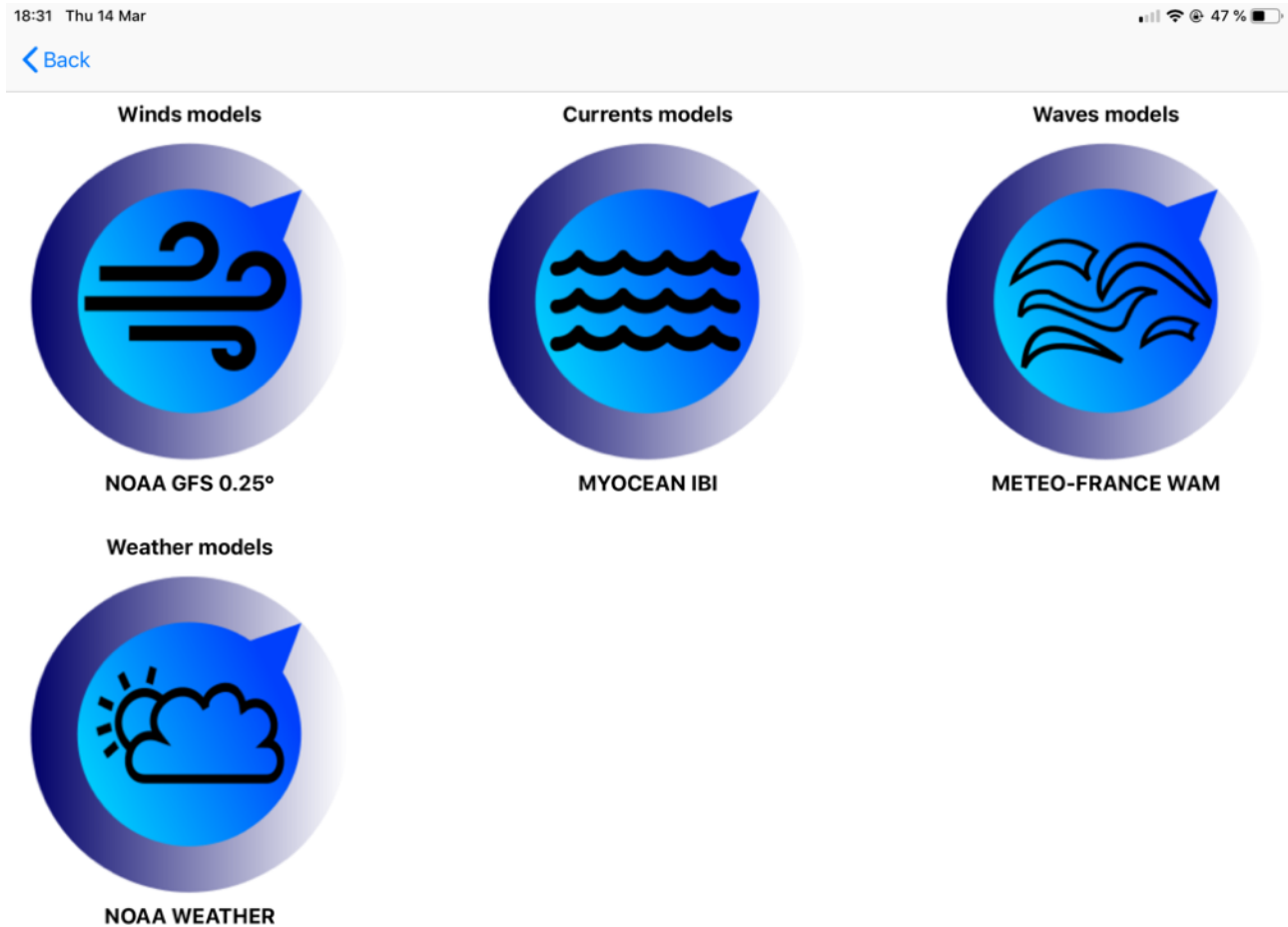
IRIDIUM



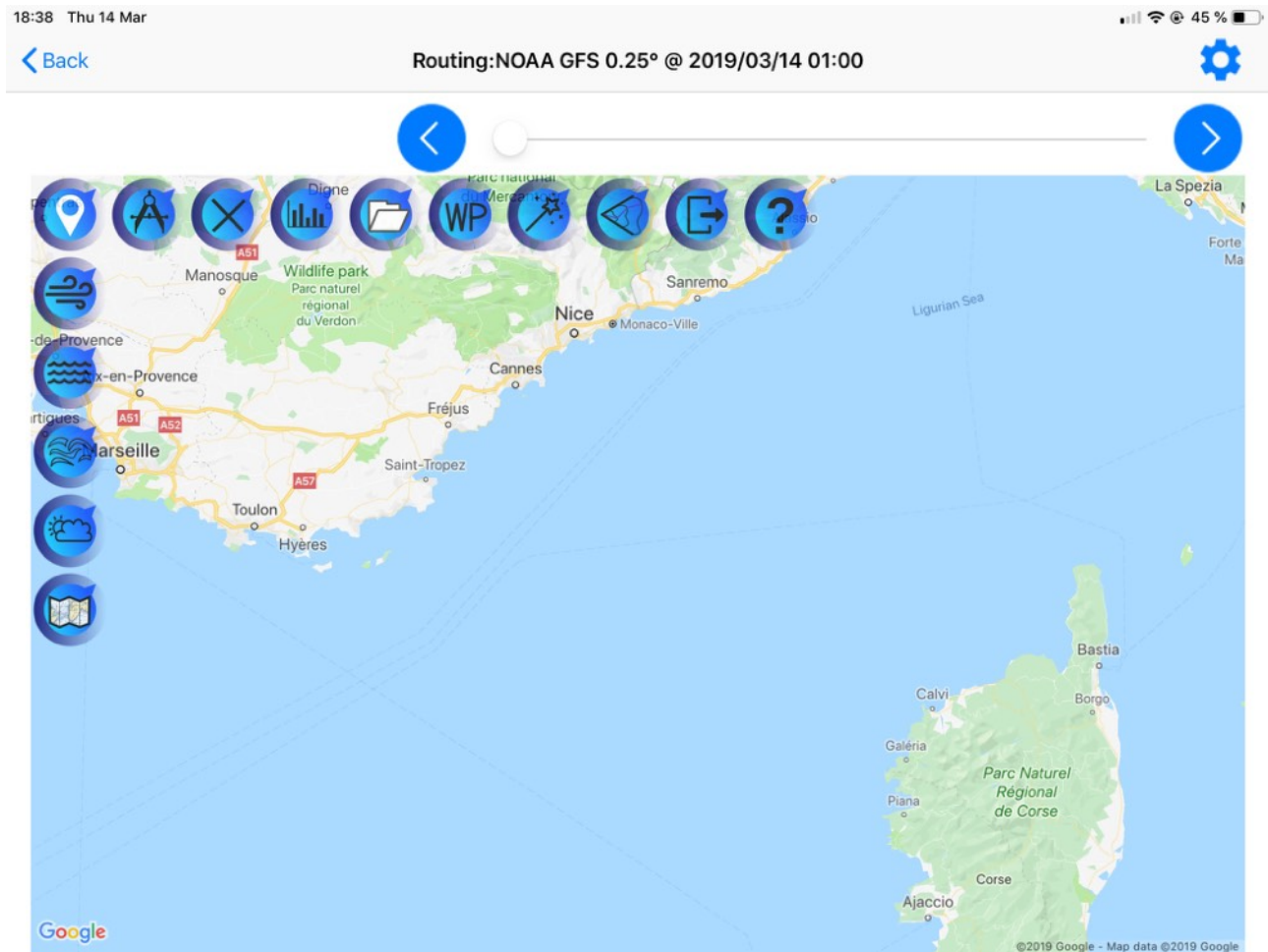
4. Select a boat: Go to boat settings menu and choose one of the 450 predefined boats. If you do not find yours, select any that has comparable performance. You will be able to calculate your boat VPP (Velocity Prediction Polars) when you are more familiar with the app..



5. Choose your weather sources in the « sources setup » menu. To start, we recommend that you select the following sources:
- Wind models: NOAA GFS 0.25
  - Current models: MyOcean IBI, Mediterranean or Global
  - Wave models: Meteo France WAM (Europe ou Global)
  - Weather models: NOAA Weather



6. Go to the « routing » module.



7. Tap on the « magic wand » icon.
8. Select your departure and arrival harbor.
9. Tap on « compute route ».

18:30 Thu 14 Mar

 47%

[< Back](#)

Compute route

Boat: Oceanis 43

Start	England	Corse	Golfe-Juan
	France	Cote d'Azur	Hyeres
	Grece	Loire	Juan-les-Pins

End	England	Bretagne Manche
	France	Corse
	Grece	Bastia

Motoring speed

5

kts

Use engine if speed below

2

kts

Duration

2 Days

3 Days

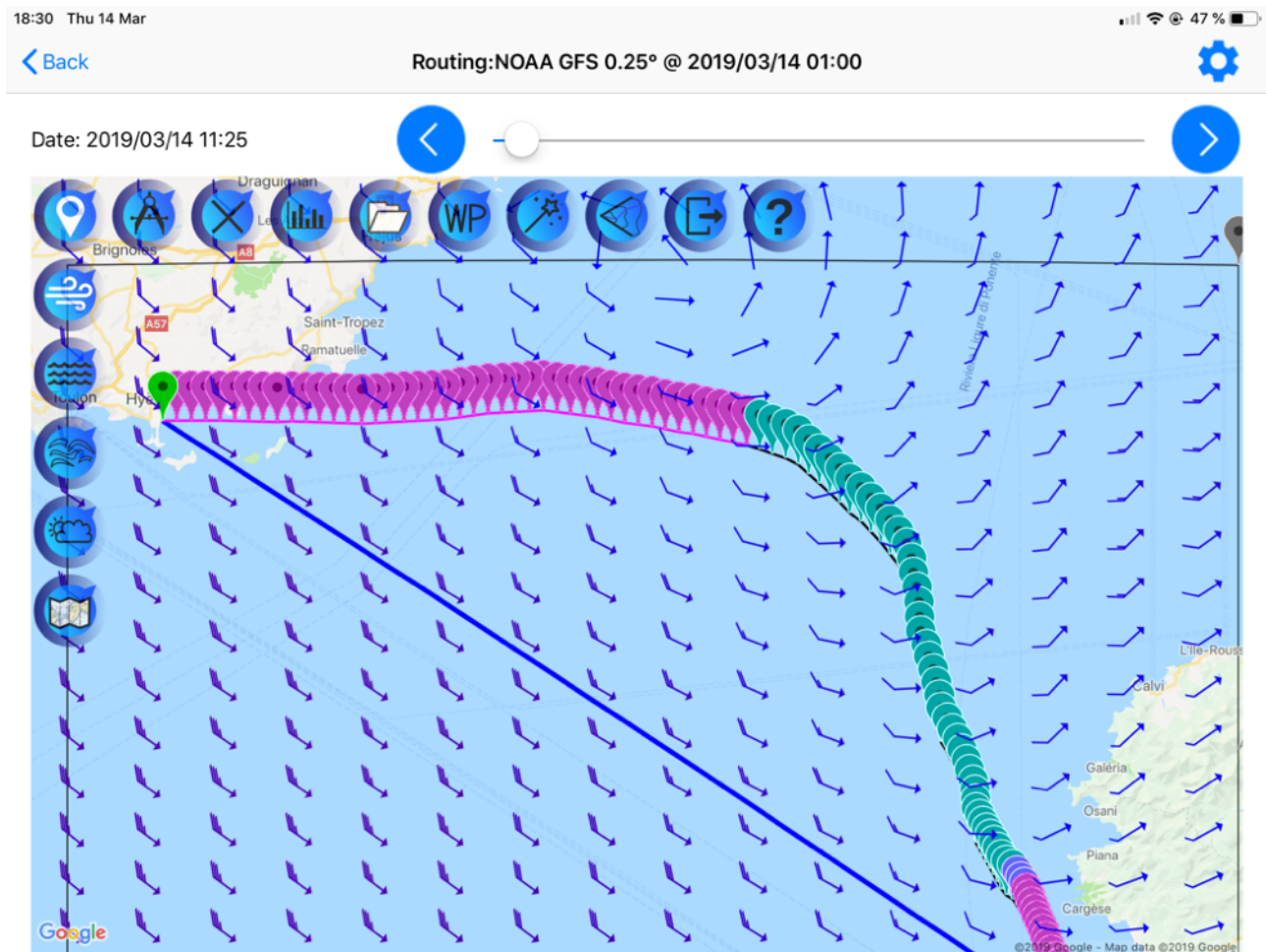
4 Days

Start at

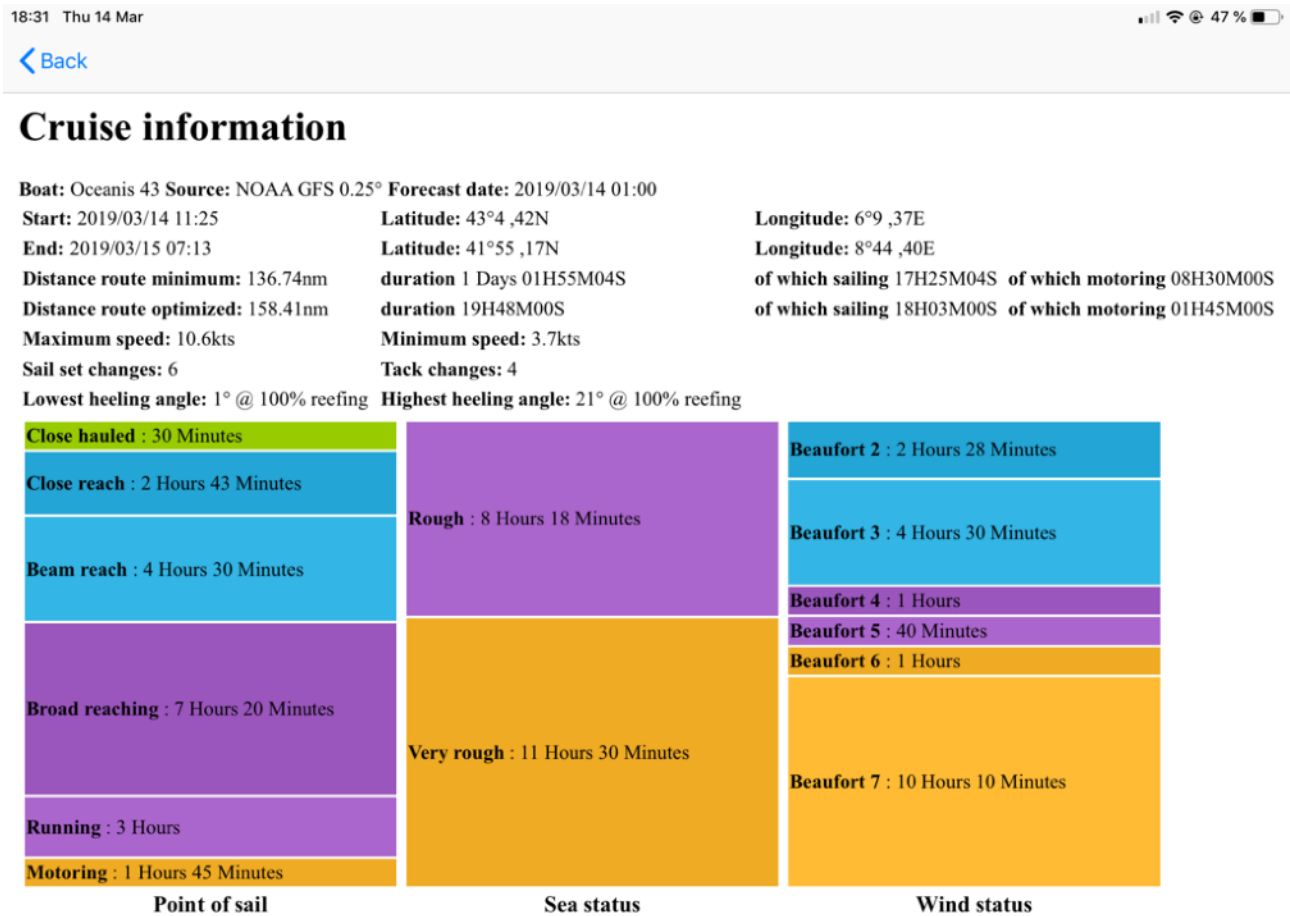
Wed 13 Mar	17	24
Today	18	25
Fri 15 Mar	19	26

NOAA GFS 0.25° of 03/14 13:00 390H remains  
MYOCEAN IBI of 03/13 20:30 079H remains  
METEO-FRANCE WAM of 03/14 01:00 087H remains  
NOAA WEATHER of 03/14 07:00 231H remains

10. Weather data will get loaded and your route will be displayed.



11. You can also see your cruise summary by tapping on the « histogram » (vertical bars) icon.



Congratulations, you have completed your first weather routing on Avalon. You can now explore the various and powerful capabilities included in Avalon Offshore by yourself or by viewing videos and reading various docs available on our site.