



# **Upload an external file into Avalon Offshore Grib, Maps, VPP (Polar) or dcc (competitors positions)**

Avalon Offshore for iOS  
Avalon Offshore for Android

A. Introduction	3
1. Apple iOS	4
Weather grib file (wind and/or current)	4
Maps	7
VPP (polars) files	9
Competitors position (DCC file)	10
2. Android	12
Weather grib file	13
Maps	13
VPP (polar) files	14
Competitors position (DCC file)	15

## A. Introduction

Avalon is able to load grib (weather files), maps or external VPPs files.

For the weather grib, this is useful for users without a Premium subscription or for rare cases where the desired grib is not included in our Premium offer.

This is the case for tide currents grib produced by the Australian company Tidetech® that are necessary for the Sydney Hobart race for example and only available via a subscription to their services.

You can load in Avalon weather grib files such as:

- Met   Consult (wind)
- Great Circle (wind)
- PredictWind (wind)
- Tidetech (current)
- Or sources already included in our Premium option if you have not subscribed to it: NAL, Arpege, Icon, Skiron, etc.

Using the processes described below, you can also load your own raster files (geotif, kap or mbtiles) and your personal VPP files (.pol format).

# 1. Apple iOS

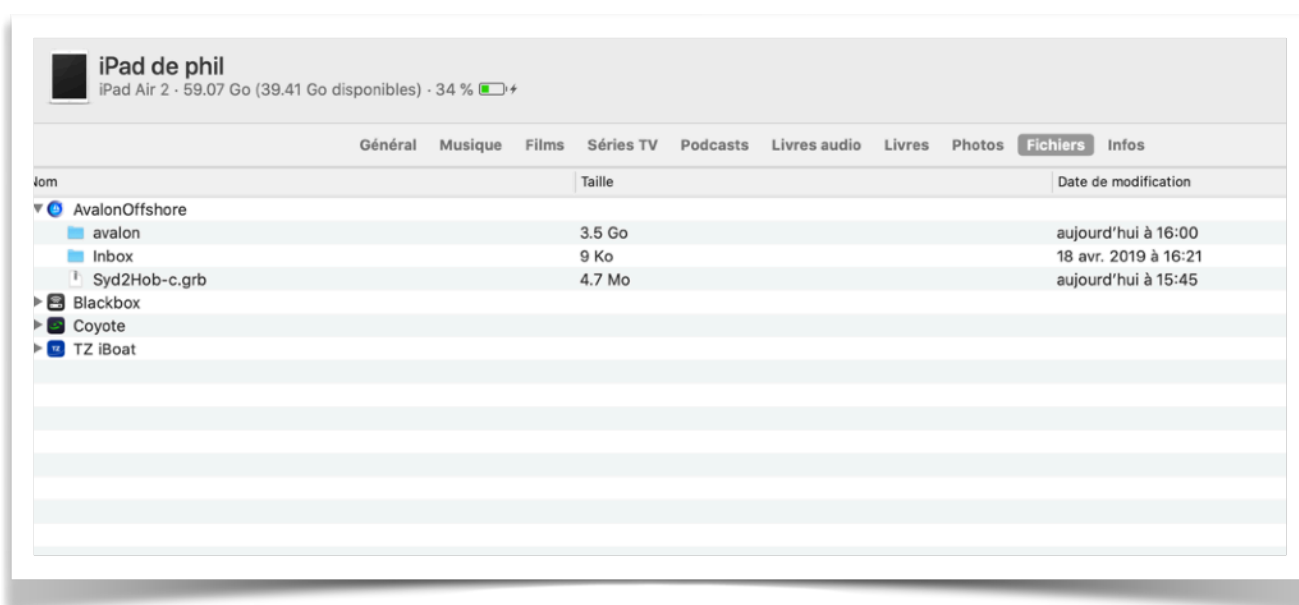
## Weather grib file (wind and/or current)

Example: current grib produced by Tidetech for the Sydney Hobart race.

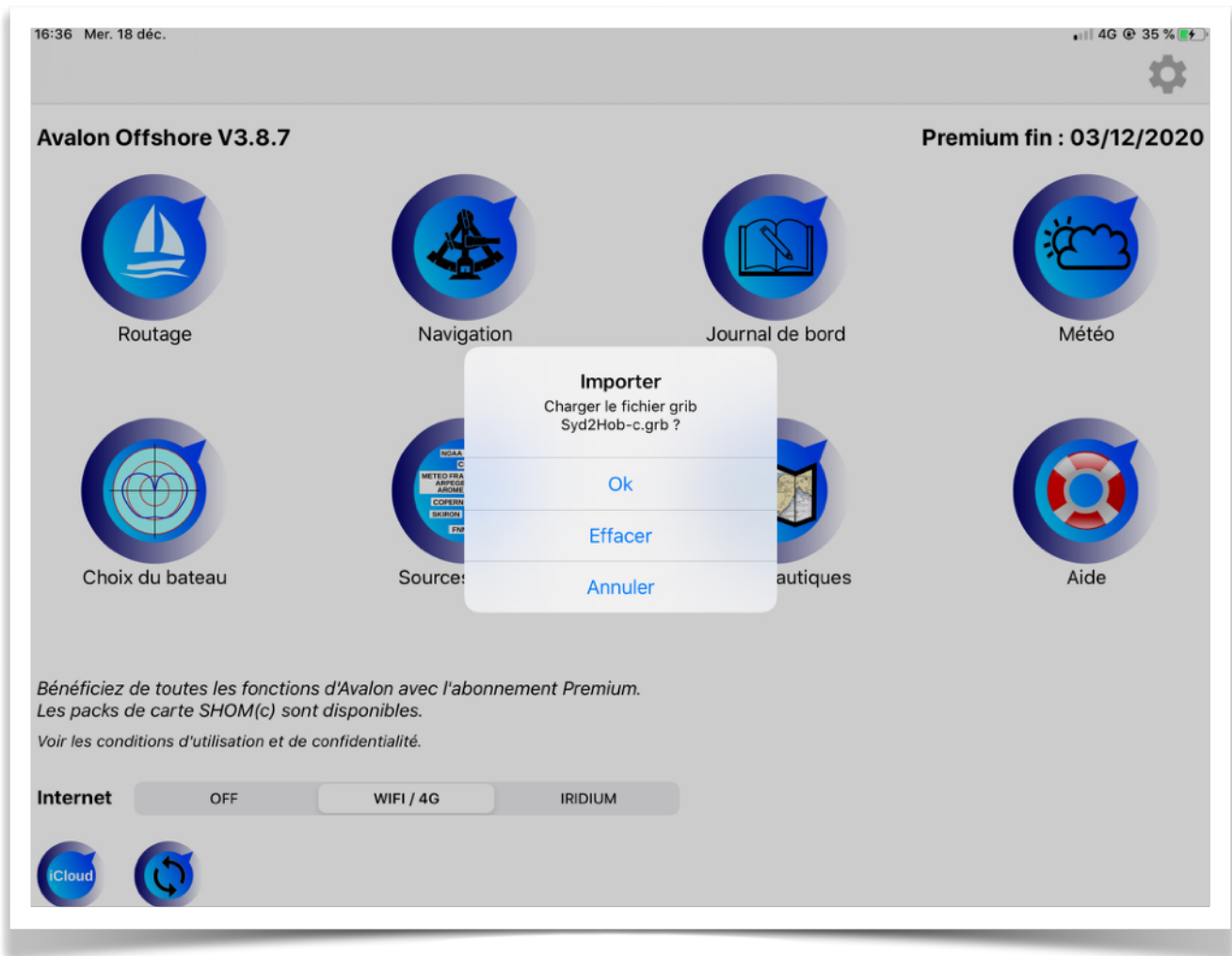
1. Download grib file from Tidetech web site
2. Unzip the file using 7z or other unzipper program
3. Open iTunes and connect your device (iPad/iPhone) to your PC/Mac via iTunes.



4. Place the grib file to be transferred into the Avalon Offshore folder. In our exemple, (dans notre exemple the file Syd2Hob-c.grb

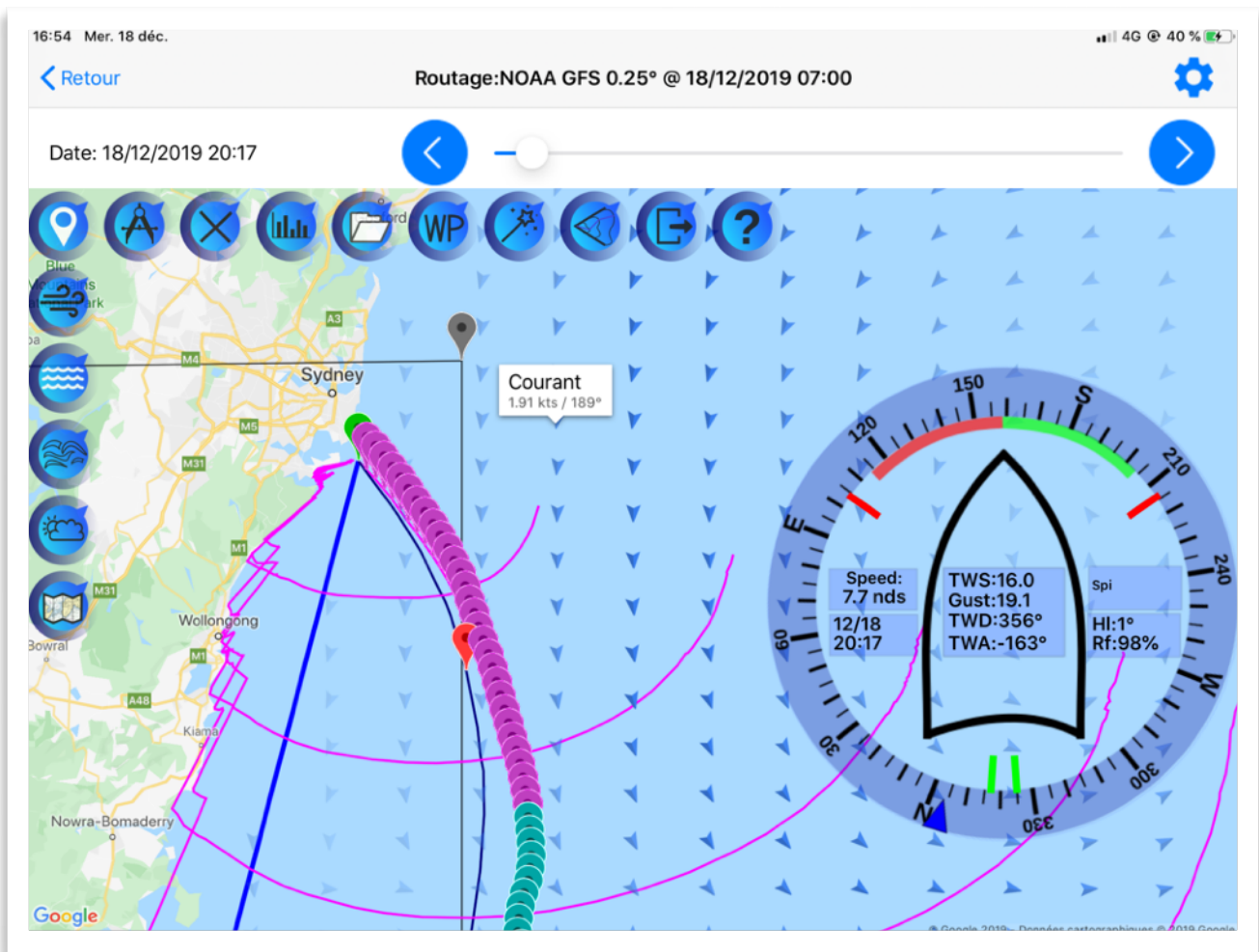


5. Star Avalon. After a few seconds, Avalon will tell you that a grib file is available. Click « OK » and the forecast will get loaded.



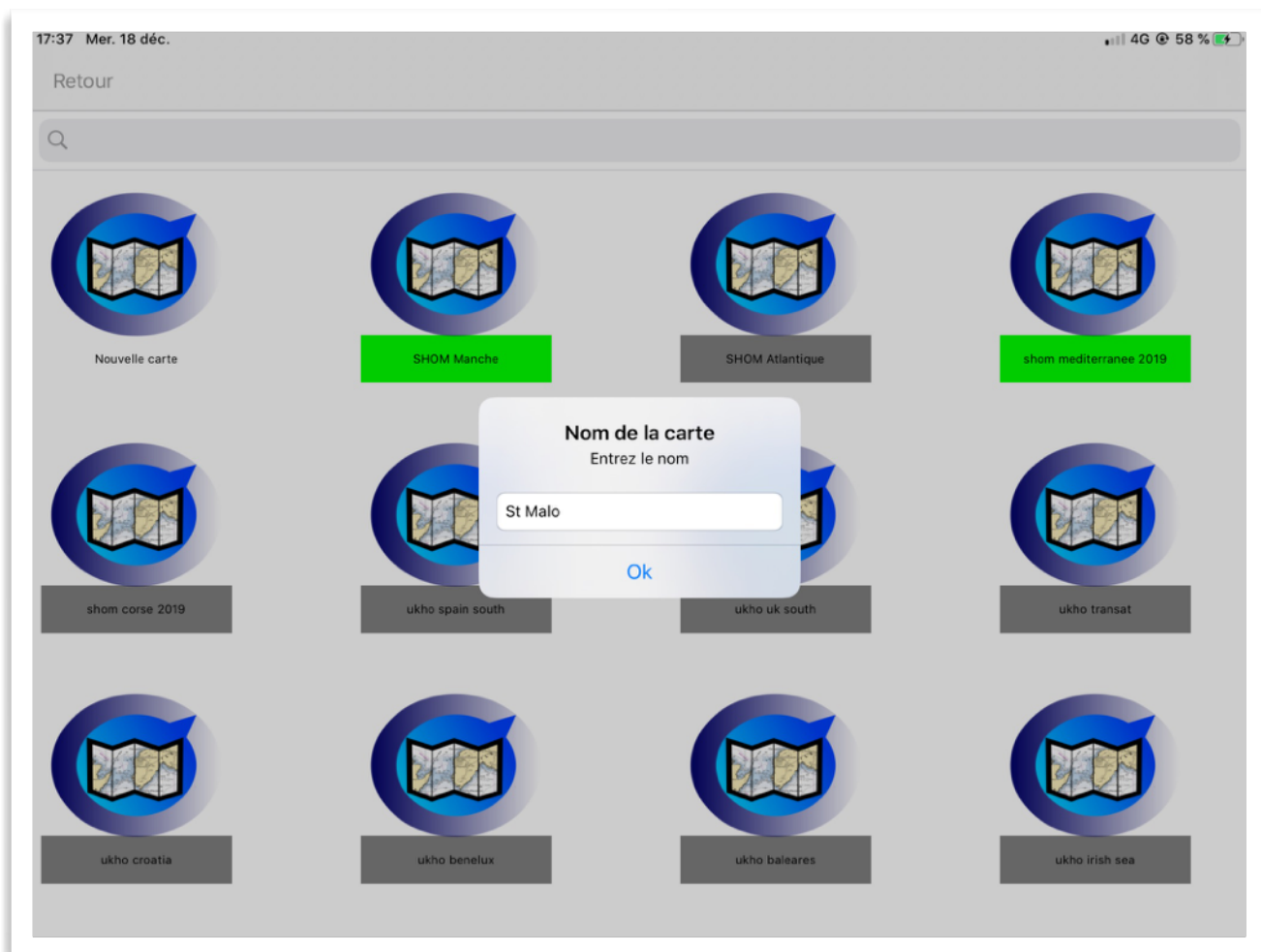
6. You can now calculate a route..

When the route is displayed, one can see that current file has been properly considered in the route calculation.



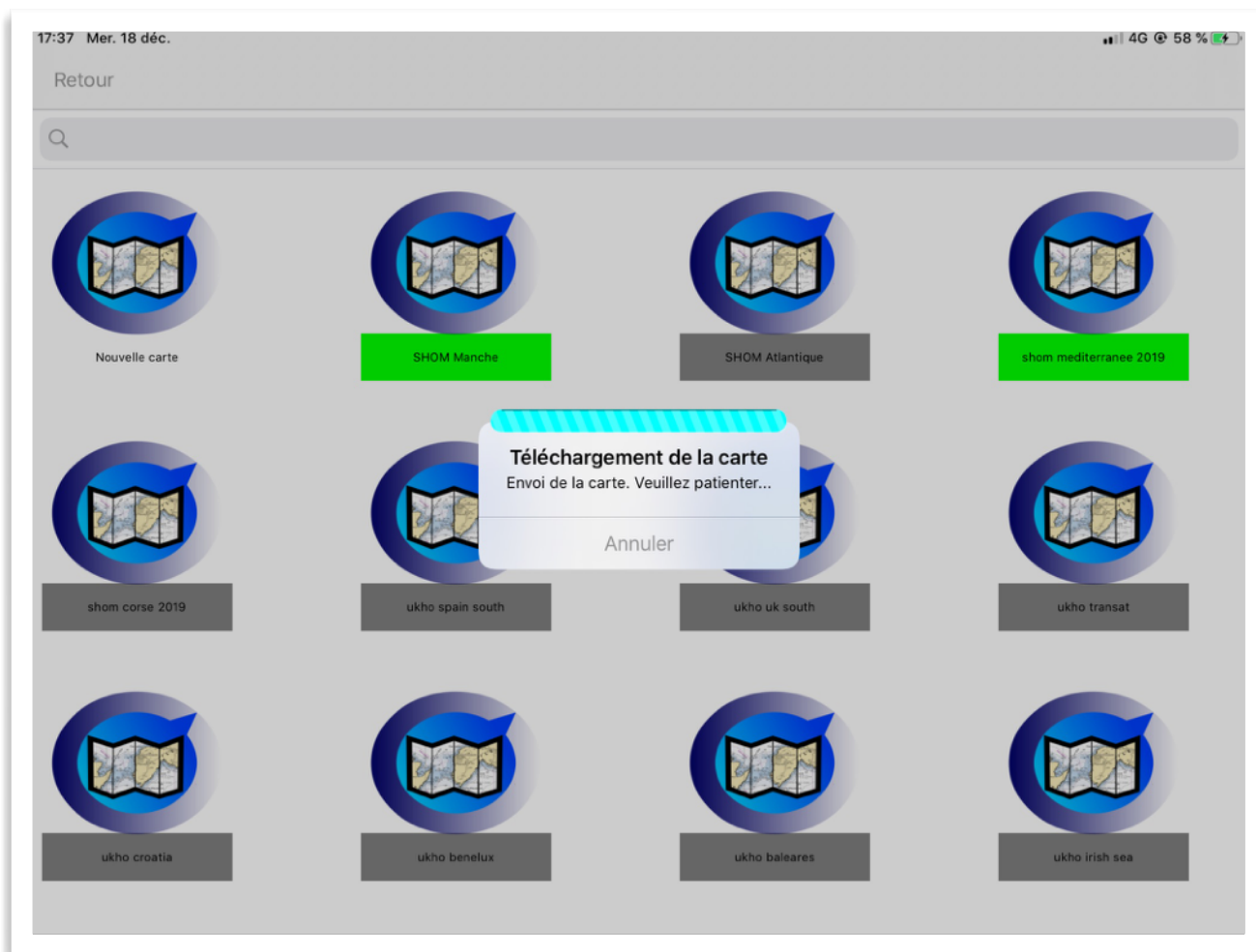
## Maps

1. Avalon supports raster maps under geotiff, kap or mbtiles format. The process is about the same as for loading grib files. Best is to use the iTunes file transfer function.
2. Move the map into the Avalon folder in iTunes, then synchronize.
3. Start Avalon
4. Go to « Chart setup module »
5. Then « Private charts »
6. Then « New chart »



7. Select the map in the list of transferred maps
8. Then enter a name for this newly loaded chart.

9. Wait for a couple of minutes for the map to be converted to Avalon format.

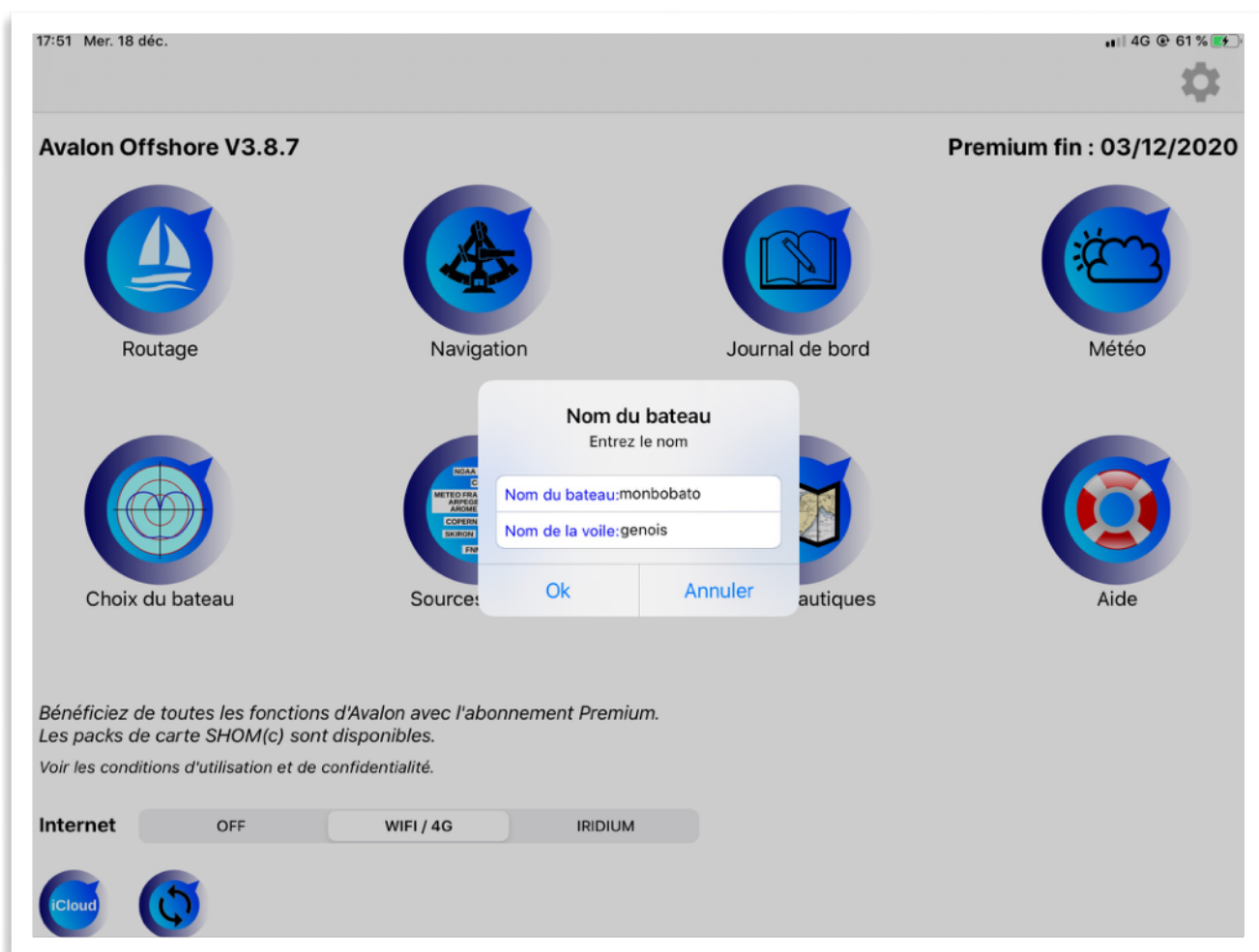


10. You can then activate/deactivate the map in « my charts ».

## VPP (polars) files

Same process: Send the VPP file via iTunes transfer file function. The file should be compatible with the « .pol » format. Please refer to our web site, VPP tab to get more information about the « pol » format: basically a csv file with tab delimiters renamed as « myfile.pol ». iTunes

Name the file in Avalon to be able to identify and activate/deactivate/modify it in the Boat setup module.



## Competitors position (DCC file)

In some regattas, the race managements sends regularly files containing info about your competitors. The file is complying with the « dcc » format.

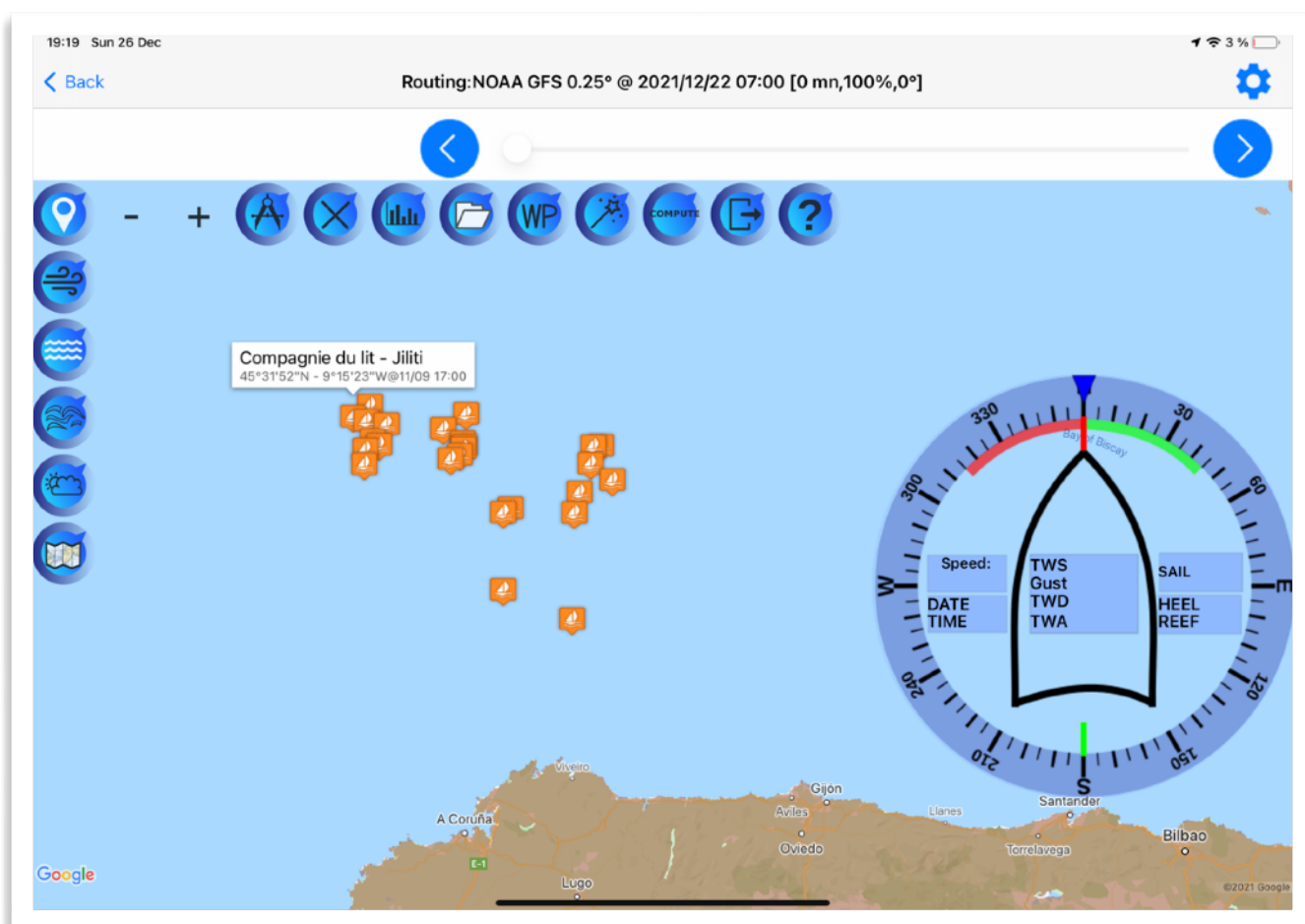
There are 2 kind of files:

- An initial file (.dcc format) that contains info about the boats. This file is sent once before the departure of the regatta. (this file is large and could be difficult to receive via Iridium)
- Additional files containing the last position of your competitors. Those are sent at regular intervals that depend upon the race. Those files are small and generally received by mail.

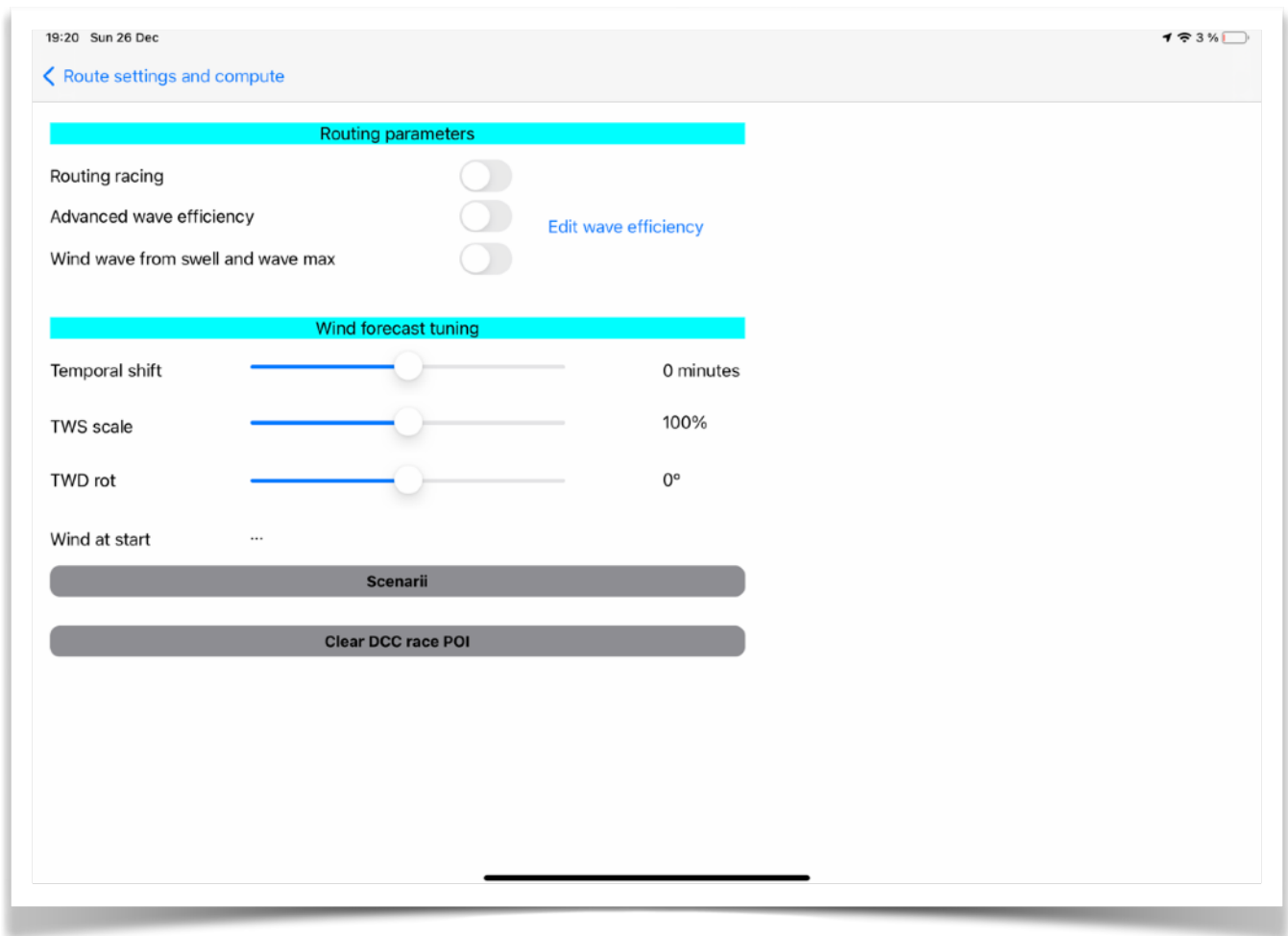
This info can be added like any other type of external file into Avalon:

- Via email. The dcc format is recognised by Avalon and the dcc file can be copied directly into Avalon.
- Via iTunes (Windows to iOS) or File Transfer (MacOs to iOS) . The transfer is done via the synchronisation.

Whatever the méthode you use, your competitors will appear as POI-DCC icon in the routing screen.



To erase the icons, click on « Clear DCC race POI » from the « race settings » screen.



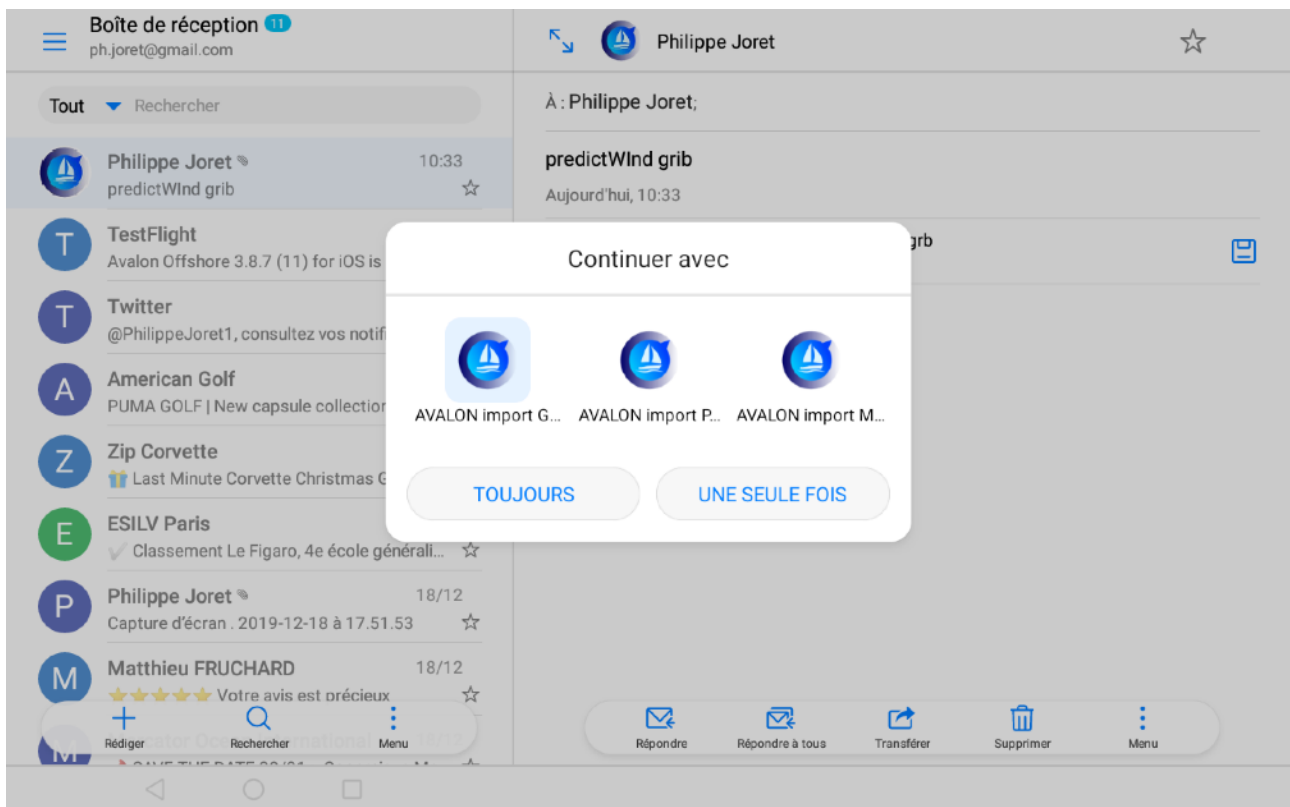
## 2. Android

As on Apple iOS, it is possible to transfer into Avalon external files:

- Weather grib files
- Raster maps (geotiff, kap or mbtiles format)
- VPP (polar) files (.pol format)

Android being a more open platform than Apple iOS, the file transfer is done via email or via a drive such as Google Drive.

Avalon recognizes the types of the files (grib, map or VPP) and will propose you to import the file.(Maps)



Select the appropriate option for the type of file you are importing.

---

## Weather grib file

Just accept and the grib file will be used by Avalon when calculating your next routes.

---

## Maps

Same... with the difference that Avalon will ask you to name the map.

Allow for a couple of minutes to let Avalon convert the file to its own format.

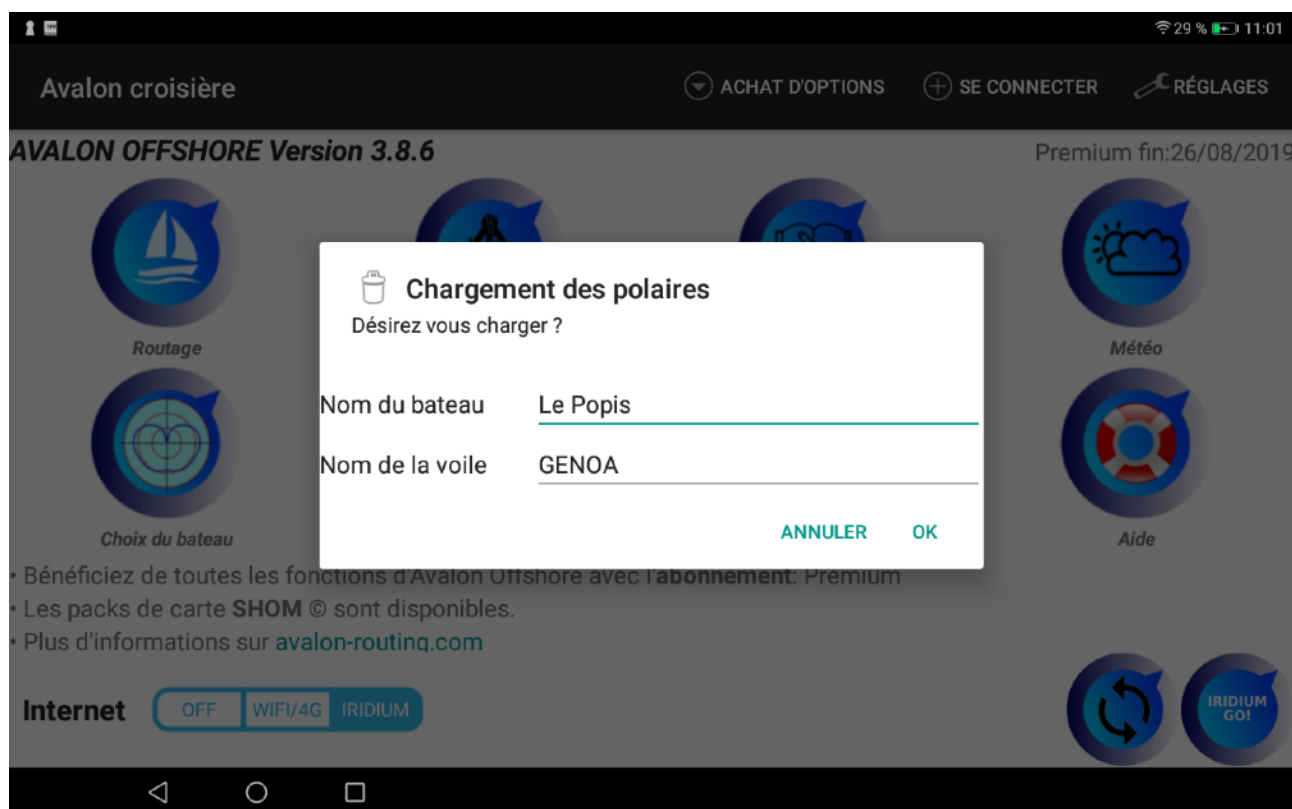
You can then activate/deactivate the map in the « My charts » menu, depending upon the maps you need for the cruise.

(the maps stays in the permanent memory of the device until you decide to remove them).

(add screenshot here)

## VPP (polar) files

Avalon automatically starts and ask you to name the the boat and the sail set for proper identification after.



The loaded VPP files are then available in the « Boat setup » module for edition, selection, display, etc.

---

## Competitors position (DCC file)

In some regattas, the race managements sends regularly files containing info about your competitors. The file is complying with the « dcc » format.

There are 2 kind of files:

- An initial file (.dcc format) that contains info about the boats. This file is sent once before the departure of the regatta. (this file is large and could be difficult to receive via Iridium)
- Additional files containing the last position of your competitors. Those are sent at regular intervals that depend upon the race. Those files are small and generally received by mail.

This info can be added like any other type of external file into Avalon:

- Via email. The dcc format is recognised by Avalon and the dcc file can be copied directly into Avalon.
- Via the SD-Card.

Whatever the méthode you use, your competitors will appear as POI-DCC icon in the routing screen.

(See picture in the « Apple Chapter »)

To erase the icons, click on « Clear DCC race POI » from the « race settings » screen.

(See picture in the « Apple Chapter »)